



CARD ATTACHMENT FOR GIFT BAGS

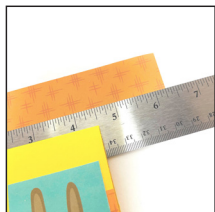
SUPPLIES & TOOLS

- Pre-made Card with folded edge on top*
- Gift Bag Tote - Solid color coordinating with card, larger than the card
- Coordinating cardstock to bag and card* (Step 2 helps determine measurement)
- 1/4-inch Double Stick Tape #30013284
- Pencil/pen for marking
- Ruler - metal edge
- Craft Utility Knife and cutting mat

NOTE: Since the card will be slipped onto the gift bag, the folded edge of the card should be at the top. Keep this in mind when making your card.



INSTRUCTIONS



1. Measure the card's folded top edge and add 1 3/4-inches to get the width of the cardstock you will need for the attachment. The height measurement should be a minimum of 2 inches.

The sample card is 4 1/2-inches long so the cardstock piece needs to be 6 1/4-inches long by 2-inches tall.



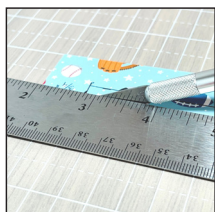
2. Place the cardstock with the right side down. Measure 1-inch down from the top edge and mark the spot.

Measure in 3/4-inch from each side edge and mark. Draw a line connecting the two points.



3. Measure 1/4-inch down from the first 1-inch line. Draw a new line connecting the 3/4-inch ends.

You should have a skinny 1/4-inch box.



4. Cut the skinny box out along the pencil lines using a craft utility knife with a metal edge ruler.

The cardstock piece should have an opening that is 1/4-inch tall and 1/4-inch wider than the card's width.



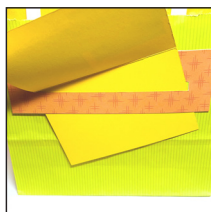
5. Place double stick tape only along the top edge and just above the opening slot.

Do not place tape on the sides or below the slot opening.



6. Slip the card through the slot.

Position the piece onto the front of the gift bag and adhere.



7. The card should hang from the slot but it is still removable.



8. Finished samples.